

## Chapter 1: Getting Into Your Account—Part 1: Text Access

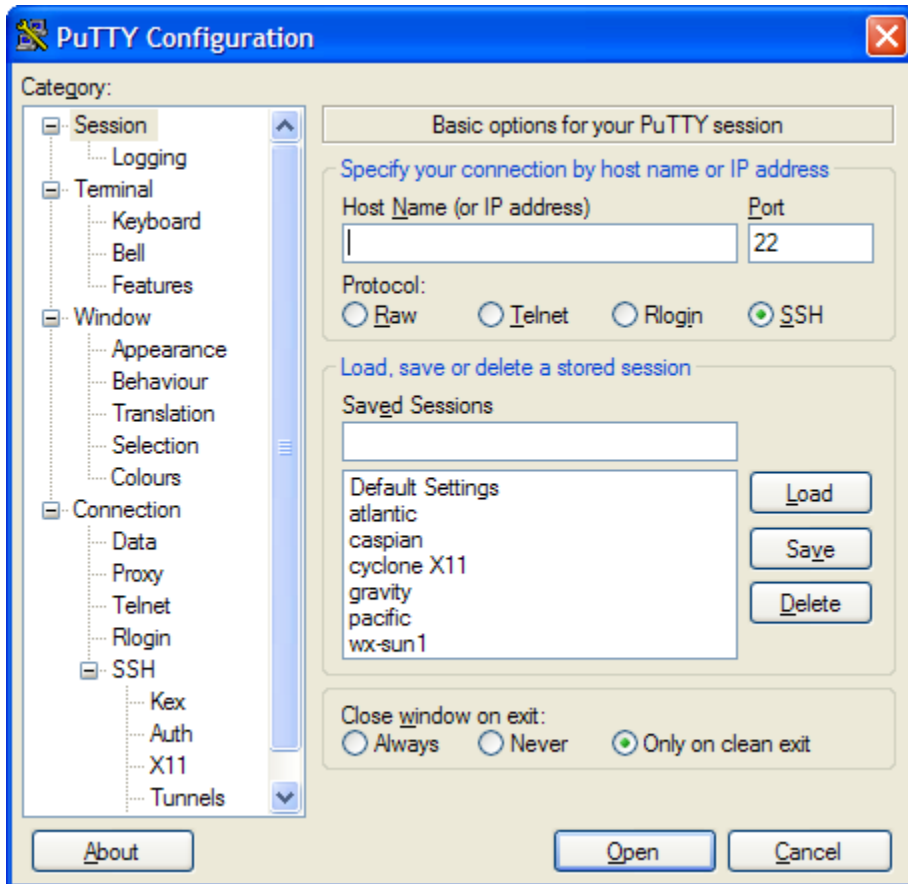
The computers in HL 511 are Macintoshes. The computers in HL 513 are Window XP computers. Your home computer is probably either a Windows 7 computer or some kind of Mac. None of these computers are useful for writing computer programs. However, you can *use* these computers to connect to other computers that *do* have the right software packages for you to use.

NOTE: All of these ways of connecting your computer to Atlantic are based on something called “ssh” or “secure shell”. This is a fancy technology that heavily encrypts and secures what you are doing, but both YOUR computer and Atlantic will probably prompt you from time to time to be sure that you know what you are doing. In particular, you’ll probably see a message saying something about Atlantic being an “unknown host” or that its identity “cannot be confirmed”. This is no problem—no one is trying to hack your computer or anything like that. Just answer the security prompts (I think that the answer is always “yes”) and move on.

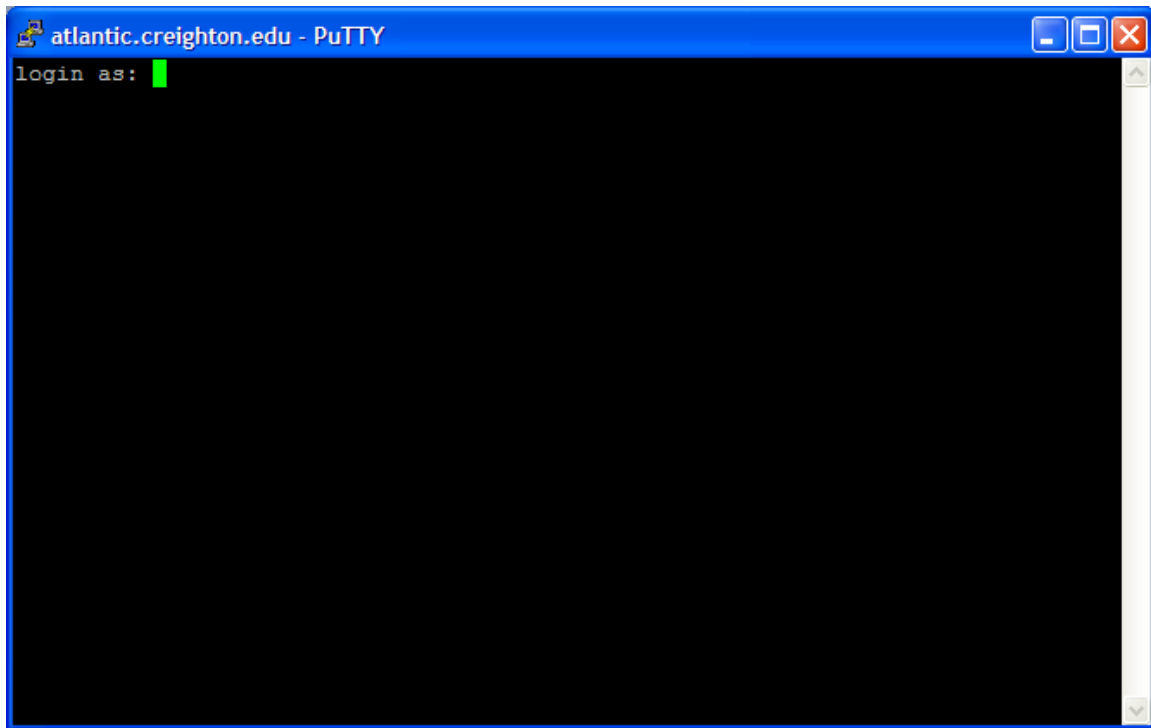
### From a Windows Computer That Has “Putty” Installed

“Putty” is a free program that you will find on many computers. It is used to connect a Windows computer to a Linux computer, giving you access to the Linux as if you were sitting in front of it (instead of in front of your Windows computer). If the computer you are using already has Putty installed (for example, the machines in HL 513 or, eventually, your home computer), this will be the easiest way for you to access your account.

Once you have Putty installed and configured (a one time process, described in the following section), each time you want to work on your account on Atlantic you’ll just launch Putty, getting a window that looks like this:



Your list of “Saved Sessions” will look a bit different from this, but “Atlantic” will be one of the choices. Just double-click on “Atlantic” to start the connection. The following window will pop up:



You are now connected to Atlantic, the computer that you will be doing most of your work on in this class. Enter your login—it’s probably your Creighton NetID unless I told you otherwise. Then enter your password, and you’ll be logged in!

#### ONE TIME INSTRUCTIONS: Downloading, Installing, and Configuring Putty

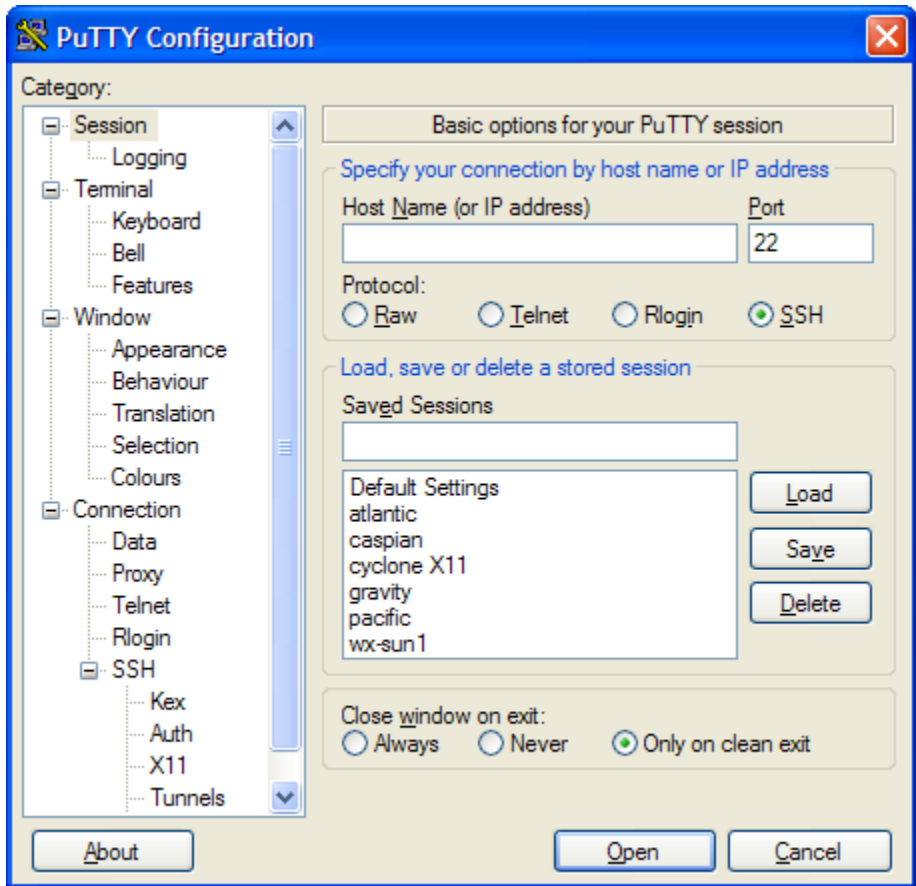
If your computer does NOT have Putty installed or configured, it is quite simple to get it and set it up. You can download Putty from the following website:

<http://www.chiark.greenend.org.uk/~sgtatham/putty/download.html>

If you don’t feel like typing in that whole address, just Google “putty” and it is normally the first link.

Download the version of Putty for Windows—it is typically a link labeled “putty.exe”. Save that file to your desktop, because you are going to be using it about a million times this semester.

When you double-click on the new Putty icon on your desktop, Windows will probably prompt you to confirm that you are really willing to run this program that you just downloaded off the scary Internet—it’s just fine. Then you will get a window that looks like this (except that your list of “Saved Sessions” won’t yet be populated):



Up in the text entry box labeled “Host Name (or IP address)” enter `atlantic.creighton.edu` and then click inside the “Saved Sessions” text entry box. In that box, enter the name that you want to call this connection to Atlantic, with something like `atlantic` being the obvious choice.

Now click on the Save button, and an entry called “atlantic” or whatever you called it will now appear in the Saved Sessions list. As mentioned in the previous section, that will now be your link to accessing Atlantic to do your course work—you only have to set up Atlantic like this ONE TIME.

From a Macintosh

Accessing Atlantic from a Macintosh is also possible—in fact, you’ll be doing that more or less every day in the classroom. The steps are a bit less intuitive than simply launching Putty from the Desktop (like you do on a Windows computer):

1. Start the “Finder”.
2. Click on “Applications”.
3. Click on “Utilities”.

4. In the list of Utilities, click on “Terminal”.
5. In the Terminal window that pops up, type the following command:  
ssh schragej@atlantic (note: if you are off campus, you’ll need to type  
atlantic.creighton.edu instead of just atlantic.)  
except instead of “schragej” you will use your login (probably your NetID).